

Atlas Copco Portable air compressors

XA(T,H)S 37-97

32 – 89 l/s, 1.9 – 5.3 m³/min, 67 – 190 cfm

Series 7,

Versatile compressors for wide ranging applications



Atlas Copco

Series 7 **A complete range designed to achieve the highest customer satisfaction**

Comprising models XAHS 37, XAS 47, XAS 57, XAS 67, XATS 67, XAS 77 and XAS 97, Series 7 are an innovative range of single axle, oil injected rotary screw compressors.

Powered by the all new Deutz 2011 diesel 2- or 3-cylinder engine range, Series 7 will provide a reliable source of compressed air to drive pneumatic tools including chipping hammers, jackhammers, nut runners, grinding tools and rammers. High free air delivery applications, including sandblasting, are also covered.

An optional integral 6.5 or 12 kVA generator can be specified to provide additional power for welding, lighting, heating, site instruments and power tools.

A wide range of further options, listed in outline at the end of this document, are also available.

The features you have asked us for

In depth market analysis, ranging from questionnaires, customer panels and customer visits, has enabled us to build new Series 7 with the specifications you have asked for. Core values include: Reliability, durability, low cost of ownership and excellent serviceability.

By listening to your demands, Atlas Copco has developed a number of new features. In addition to an opening canopy, removable side panels and detachable front and rear baffle are fitted. These are bolted to a 4mm thick support frame. This economical feature offers fast and easy service access.

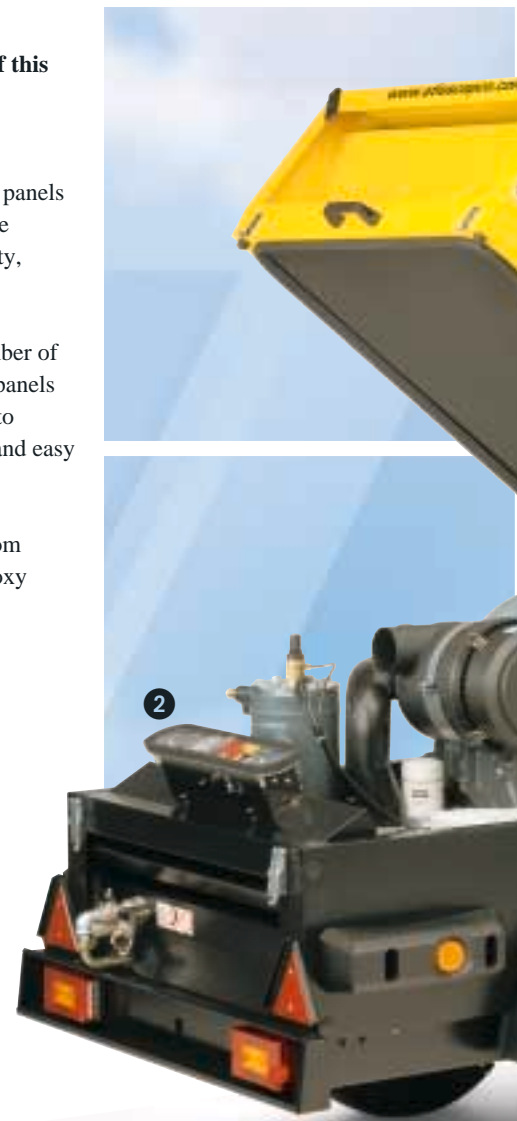
For best in class corrosion protection, all panels are produced from zincor steel with a powder coat finish; the chassis has a KTL epoxy layer coating with a powder coat finish.

Built and tested to ISO 9001 quality assurance standards

Atlas Copco's stringent manufacturing standards follow ISO 9001 quality assurance regulations. All compressors are produced and tested to exacting standards for optimum performance in the most demanding conditions.

Atlas Copco - the world leader in portable air compressors

One in three compressors sold throughout the World is manufactured by Atlas Copco. Produced in the World's largest dedicated compressor manufacturing plant, our advanced research and development and proven products ensure we offer the best solution for all your compressed air needs.



Series 7 Everything you asked for in compressed air power

1 High efficiency

By combining a low rotor speed with few moving parts, the compressor element offers high efficiency with reduced wear. With Atlas Copco, long-term reliability and efficiency comes as standard.

2 Centralized controls

All controls are grouped on a single panel above the outlet valves and covered by a rigid plastic cover for safety, ease of monitoring and operation.

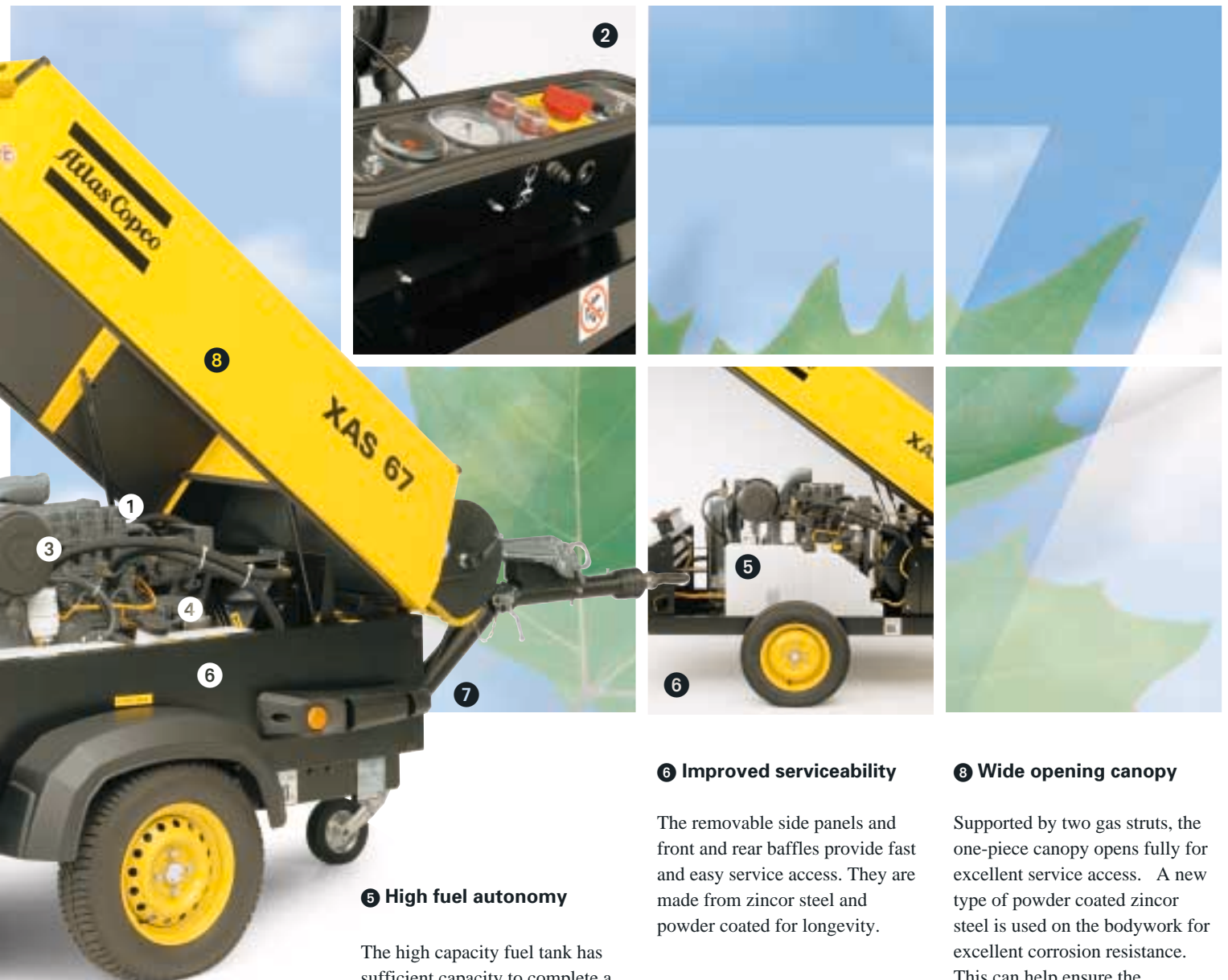
3 Heavy duty air filter

A single, high performance two-stage air intake filter is standard. It prevents dust and dirt particles from entering the engine and the compressor.

A service indicator on the filter indicates when it needs maintenance or replacement.

4 Low operational cost

A stepless and fully automatic regulator varies the engine speed to match air demand. This reduces power and fuel consumption and ensures continuous air flow at stable pressure.



5 High fuel autonomy

The high capacity fuel tank has sufficient capacity to complete a full shift. Made from transparent material, the tank's high capacity reduces downtime lost to mid-shift refueling.

6 Improved serviceability

The removable side panels and front and rear baffles provide fast and easy service access. They are made from zincor steel and powder coated for longevity.

7 Removable undercarriage

The undercarriage can be removed for static vehicle mounting.

8 Wide opening canopy

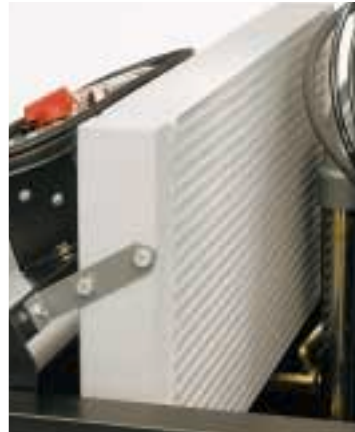
Supported by two gas struts, the one-piece canopy opens fully for excellent service access. A new type of powder coated zincor steel is used on the bodywork for excellent corrosion resistance. This can help ensure the compressor retains a higher residual value.

Series 7 All the options for your specific applications

Series 7 models can be supplied with a 20 m capacity hose reel. Manufactured from tough corrosion resistant polyethylene, it is supplied with a 3/4" reinforced hose. The hose can be operated directly from the reel.



An aftercooler and filters are available on all 7, 10.3 and 12 bar models. The unit is installed on the cool side of the compressor. For additional liquid and particle removal, the aftercooler can also be fitted with a PD and QD filter.



On XAS 47 up to XAS 97, we use a 1 litre lubricator. The flow of the lubricating oil can be controlled by a knob at the side of the lubrication. A level indicator is foreseen to prevent running without lubricator oil.



XAS 67 and XAS 97 models can be specified with an integral 12 kVA generator. Developing 6.5 or 12 kVA, the generator can be fitted with an automatic control system that will continuously monitor the demand for power. The system will match the engine speed to power demand, saving fuel and reducing emissions.

Road transport lights and reflectors supplied in accordance with national requirements.



Support mounted models with high integral strength for longevity.

Adjustable with brakes



Adjustable without brakes



Fixed with brakes



Fixed without brakes



Options

	XAHS 37	XAS 47	XAS 47 G	XAS 57	XAS 67	XAS 67 G	XATS 67	XAS77	XAS 97	XAS 97 G
Safety chain	•	•	•	•	•	•	•	•	•	•
Road signalisation	•	•	•	•	•	•	•	•	•	•
Semi road signalisation	•	•	•	•	•	•	•	•	•	•
24V adaptor	•	•	•	•	•	•	•	•	•	•
Wheel chocks	•	•	•	•	•	•	•	•	•	•
Loose ball coupling	•	•	•	•	•	•	•	•	•	•
Toolbox single	•	•		•	•		•	•	•	
Toolbox twin					•		•	•	•	
Lubricator 1 litre		•	•	•	•	•		•	•	•
Aftercooler + Waterseparator	•	•	•	•	•	•	•	•	•	•
PD filter	•	•	•	•	•	•	•	•	•	•
QD filter	•	•	•	•	•	•	•	•	•	•
Reheater	•	•	•	•	•	•	•	•	•	•
Anti-frost device	•	•	•	•	•	•	•	•	•	•
Generator 6 kW 110 V			•			•				•
Generator 6.5 kVA 230 V - 3Ph			•			•				•
Generator 6.5 kVA 230/400 V			•			•				•
Generator 12 kVA 230V - 3Ph						•				•
Generator 12 kVA 230/400 V						•				•
Hose reel	•	•	•	•	•	•	•	•	•	•
Safety cartridge	•	•	•	•	•	•	•	•	•	•
Spark arrestor	•	•	•	•	•	•	•	•	•	•
Overspeed valve	•	•	•	•	•	•	•	•	•	•
Complete refinery equipment	•	•	•	•	•	•	•	•	•	•
Non return valve	•	•	•	•	•	•	•	•	•	•
Cold start -20°C	•	•	•	•	•	•	•	•	•	•
Anti-theft device	•	•	•	•	•	•	•	•	•	•
Particle filter	•	•	•	•	•	•	•	•	•	•
Spillage free frame	•	•	•	•	•	•	•	•	•	•
Customer colour frame 1x	•	•	•	•	•	•	•	•	•	•
Customer colour canopy 1x	•	•	•	•	•	•	•	•	•	•
Customer colour canopy 2x	•	•	•	•	•	•	•	•	•	•
Additional literature set	•	•	•	•	•	•	•	•	•	•

• = available

Series 7

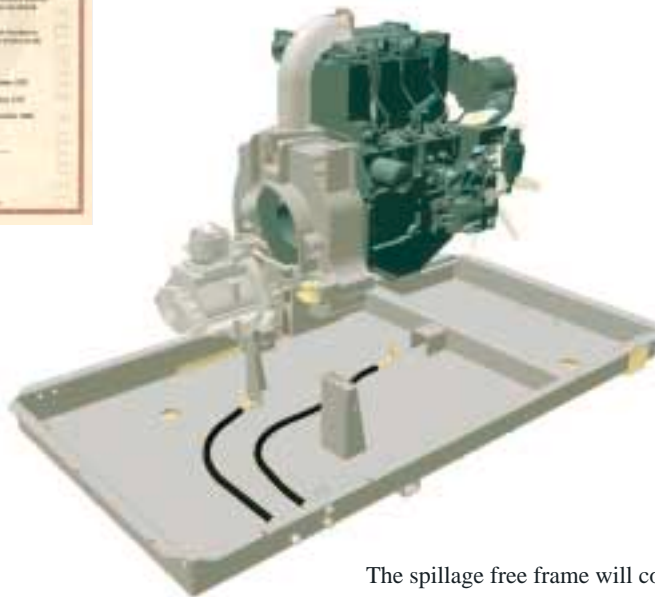
Designed for the environment

Meets legal safety and environmental requirements

All Series 7 compressors meet current European and US legal requirements relating to the working environment and regulations concerning safety, exhaust emissions and noise. Deutz 2011 engines fully comply with COM II and EPA II exhaust emission regulations. Atlas Copco has fully implemented its Environmental Management System into the design and manufacture process of these machines, fulfilling the requirements of ISO 14001. All models comply with the outdoor noise directive 2000/14/EC. Some units in the range comply with outdoor noise limits set for 2006.



Due to their low noise rating, Series 7 compressors may be suitable for operation in noise sensitive environments, including near hospitals, schools and residential areas. Night operation may also be possible.



The spillage free frame will contain all fluid so no oil fuel or coolant can leak directly to the ground.

Principal data

Compressor

Type

Normal effective working pressure

Actual free air delivery guaranteed according to ISO1217 ed.3 1996 annex D

Sound power: acc. 2000/14 EC

Sound pressure level acc. ISO2151 from 7m

Oil capacity

Engine

Type - model

Number of cylinders

Full load speed

Output at rated speed

Capacity of fuel tank

Generator

Electric power 1 ph
3 ph

Sockets CEE 1 ph
CEE 3 ph
Schuko 1 ph

¹⁾ complying with British Gas Spec. TIN 12

²⁾ complying with ISO 8528/8 - DIN 6280/10

Unit dimensions

towbar :

Length (A)

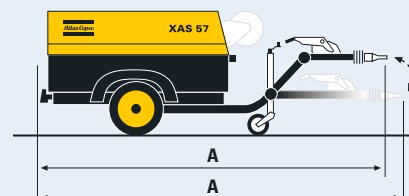
Width (B)

Height (C)

Weight (ready-to-operate)

Weight (dry)

110V: +35 kg / 77 lbs – 230/400V: +42kg / 93 lbs

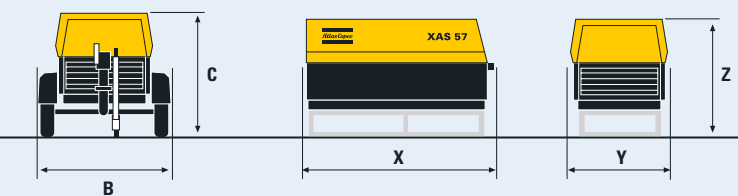


	XAHS 37	XAS 47	XAS 47 DdG Simultaneous	XAS 57	XAS 67	XAS 67 6.5/12 DdG Simultaneous	XATS 67	XAS77	XAS 97	XAS 97 DdG Non-Simultaneous
bar	12	7	7	7	7	7	10.3	7	7	7
psig	175	102	102	102	102	102	150	102	102	102
l/s	32	43	33	50	62	58	58	72	89	89
m ³ /min	1.9	2.6	2.0	3.0	3.7	3.5	3.5	4.3	5.3	5.3
cu.ft/min	67	92	71	106	130	125	125	152	190	190
dB(A)	98	98	98	100	98	98	98	98	100	100
dB(A)	70	70	70	72	70	70	70	70	72	72
l	8	8	8	8	8	8	8	8	8	8
gal	2.1	2.1	2.1	2.1	2.1	2.1	2.1	2.1	2.1	2.1

Deutz	F2M2011	F2M2011	F2M2011	F2M2011	F3M2011	F3M2011	F3M2011	F3M2011	F3M2011	F3M2011	F3M2011
	2	2	2	2	3	3	3	3	3	3	3
r/min	2400	2400	2750	2750	2400	2750	2750	2750	2300	2750	2750
kW	21.6	21.6	23.3	23.3	32.5	36	36	36	31.5	36	36
l	40	40	40	40	80	80	80	80	80	80	80
gal	10.57	10.57	10.57	10.57	21.13	21.13	21.13	21.13	21.13	21.13	21.13

	XAS 47 DdG 50 Hz Simultaneous		XAS 67 DdG 50 Hz Simultaneous			XAS 97 DdG 50 Hz Non-Simultaneous		
	110V¹⁾	230/400V²⁾	110V¹⁾	230/400V²⁾	230/400V²⁾	110V¹⁾	230/400V²⁾	230/400V²⁾
kW/kVA	6	4	6	4	5.5	6	4	5.5
kW/kVA	-	5.2/6.5	-	5.2/6.5	9.6/12	-	5.2/6.5	9.6/12
A	2x16+1x32	-	2x16+1x32	-	-	2x16+1x32	-	-
A	-	1 x 16	-	1 x 16	2 x 16	-	1 x 16	2 x 16
A	-	2 x 16	-	2 x 16	1 x 16	-	2 x 16	1 x 16

	XAHS 37- XAS 47- XAS 57				XAS 67-XATS 67				XAS 77- XAS 97			
	without brakes		with brakes		without brakes		with brakes		without brakes		with brakes	
	fixed	adjustable	fixed	adjustable	fixed	adjustable	fixed	adjustable	fixed	adjustable	fixed	adjustable
mm	2980	3257/3495	3093	3460/3628	3016	NA	3129	3496/3664	3016	NA	3129	3496/3664
inch	117	128/138	122	136/143	119	NA	123	139/144	119	NA	123	138/144
mm	1330	1330	1330	1330	1410	NA	1410	1410	1410	NA	1410	1410
inch	52	52	52	52	56	NA	56	56	56	NA	56	56
mm	1252	1252	1252	1252	1258	NA	1258	1258	1258	NA	1258	1258
inch	49	49	49	49	50	NA	50	50	50	NA	50	50
kg	720	725	755	770	880	NA	915	930	890	NA	925	940
lbs	1588	1599	1665	1698	1940	NA	2018	2051	1962	NA	2040	2073
kg	685	690	720	735	815	NA	850	865	825	NA	860	875
lbs	1510	1521	1588	1621	1797	NA	1874	1907	1819	NA	1896	1929



Unit dimensions

Box/Support Mounted		XAS 47 - 57	XAS 67 - 77 - 97
Length (X)	mm	1884	2018
	inch	74	79
Width (Y)	mm	960	1040
	inch	38	41
Height (Z)	mm	970/1227	970/1230
	inch	38/48	38/48
Weight (ready-to-operate)	kg	635/685	800/850
	lbs	1400/1510	1763/1873
Weight (dry)	kg	595/645	735/785
	lbs	1311/1422	1621/1730



Protect your investment... ...and for your peace of mind

Atlas Copco carefully monitors the maintenance needs of all its compressors. Service intervals are carefully assessed to ensure optimum performance is maintained and operating costs reduced. Proper maintenance will ensure your compressor runs as efficiently and economically as possible. A lack of maintenance can result in expensive down-time with a subsequent loss of production or poor performance. Avoid risks and protect the asset value of your compressor by choosing one of the unique service options provided by Atlas Copco.

Our service options are flexible. Depending on your requirements, we can supply service kits or spare parts for in-house maintenance or factory service and maintenance packages tailored to user demands.



Genuine Parts

Atlas Copco makes no compromise on the quality of replacement parts: only genuine parts provide the longevity and reliability you demand. Selected high quality Atlas Copco compressor and engine oils are also available. These meet the stringent quality specifications required to enable your unit run smoothly, shift after shift.



Service agreements

For complete peace of mind, Atlas Copco has a range of service agreements to suit your needs. Maintenance budgets are clear and simple, with prices fixed in advance. Operational costs come down and efficiency goes up. You choose the service options and the time period to suit your needs.

Commitment

Atlas Copco employs two thousand factory trained service technicians in over 150 countries worldwide. Should a problem ever occur, access to their expertise is only a telephone call away. With years of experience and ongoing investment, we are the only major compressor manufacturer providing a full 3 year factory supported warranty.



Never use compressed air as breathing air without prior purification in accordance with local legislation and standards.

